



# VF64Series

## Console DataSet

### Instruction Manual

----- contents -----

	page
1. Summary	2
2. Specifications of screen	2
2-1 Explanation of screen	2
2-2 Explanation of menu	3
2-2-1 File	3
2-2-2 Execution	3
2-2-3 Option	4
3. Explanation of set data edition	5

TOYO ELECTRIC MFG.CO.,LTD

## 1. Summary

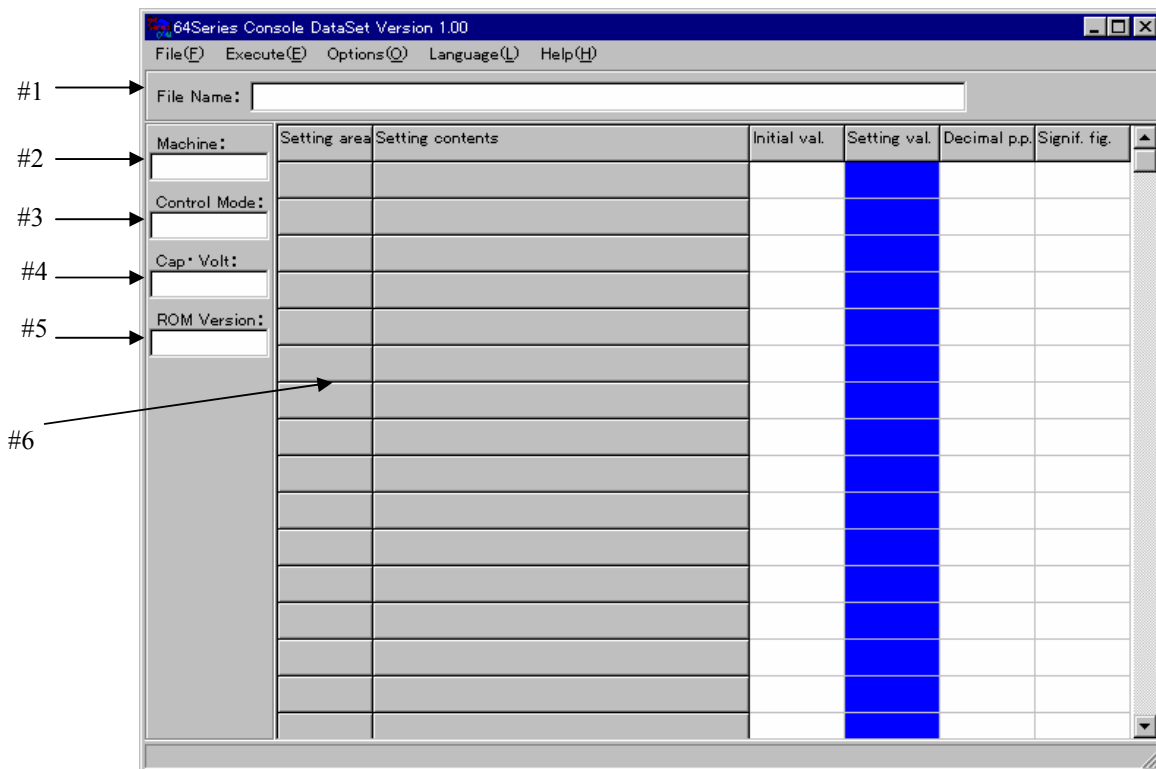
64Series Console DataSet can execute parameter setting VF64 by personal computer.  
Its features are as shown below.

- \* Selection of inverter type (VF64, ED64, VF64SDS, ED64SDS).
- \* Selection of control mode (Sensorless, Vector, Open).
- \* Selection of capacity.
- \* Selection of Version of program.
- \* READ-IN of data from VF64 .
- \* WRITE of data to VF64.
- \* Area setting of write data.
- \* STORE and READ-IN of set data.
- \* PRINT of set data.

## 2. Specifications of screen

### 2-1 Explanation of screen

When 64Series Console DataSet is started up, screen shown below is displayed.



- #1 : File name : Shows file name which is opened at present.
- #2 : Model : Shows which model is.
- #3 : Control mode : Shows which control mode is.
- #4 : Capacity : Shows which capacity is.
- #5 : Version : Shows version of which program is.
- #6 : Table of set data.

## 2-2 Explanation of menu

### 2-2-1 [File]

File menu is as shown below.

#### 1) [New]

Select when set data is made out newly.

When selected, select-screen shown below is displayed.

Select Model, Control mode, Capacity, Version of set data to be made out.

#### 2) [Open]

Select when edit again the set data edited previously or the data read-in from VF64.

#### 3) [Save]( save with superscription)

Select when storing of set data which is under editing, without change of file name.

#### 4) [Save As] (store with naming)

Select when storing of set data which is under editing, changing file name.

#### 5) [Close]

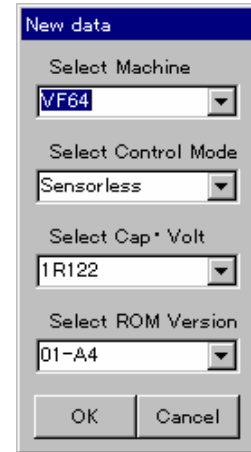
Select when file which is under editing, is closed.

#### 6) [Print]

Select when printing of file which is under editing.

#### 7) [Exit]

Select when ending of 64Series Console DataSet.



New data

Select Machine  
VF64

Select Control Mode  
Sensorless

Select Cap \* Volt  
1R122

Select ROM Version  
01-A4

OK Cancel

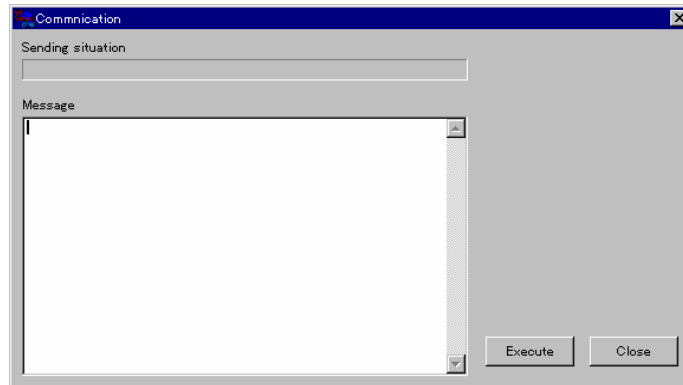
### 2-2-2 [Execute]

Execution menu is as shown below.

#### 1) [Read Data]

Select when reading-in of set data from VF64.

When selected, screen below is displayed.



Communication

Sending situation

Message

Execute Close

When [execute] button is pressed, read-in of set data starts.

Read-in set data is stored under file name "ReadData.csl".

Communication result is displayed in message.

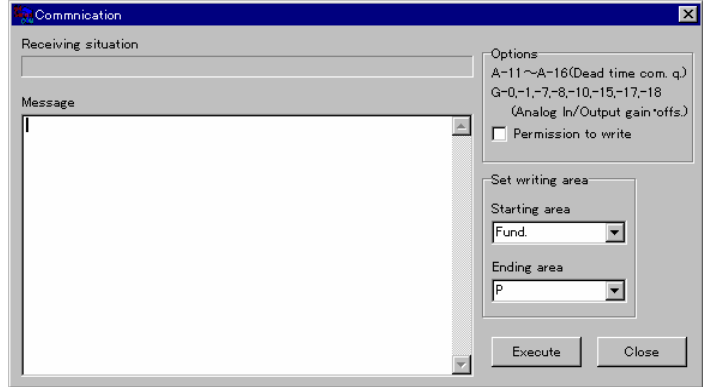
2) [Write Data]

Select when writing of set data to VF64.

When selected, screen shown below is displayed.

Writing area can be designated. Default is from Fund. area to P area. When [execute] button is pressed, Model, Control mode, Capacity and Version of set data to be written are checked. If set data are correct, writing of set data starts.

After end of writing, communication log is displayed in message. Communication log is stored with file name "writelog.txt".



Note 1) 2 kind of optional set data can not be written at default.

One are Data of dead time compensation quantity (A-11 A-16) and other are data of analog input/output gain and offset (G-0, -1, -7, -8, -10, -15, -17, -18) .

Note 2) When writing of data in 0 area, keep pressing of push button sw2 on control board of VF64 from before start of writing till its end.

Note 3) Never execute data writing during running of VF64.

2-2-3 [Option]

Option menu is as shown below.

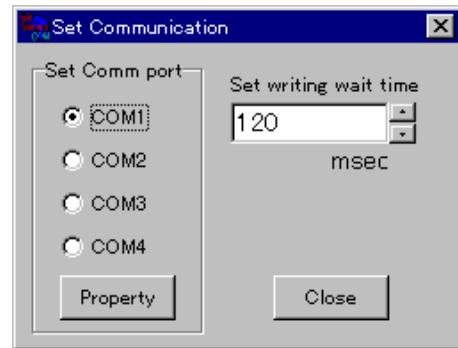
1) [Set Comm] (Communication setting)

Select when changing of COM port and of write wait time.

When selected, screen shown below is displayed.

Before execution of COM port setting, confirm setting of port of COM port number of connector of personal computer to be used, by "control panel"->"system"->"device manager"

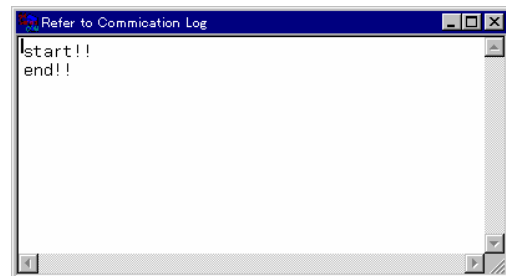
Make COM port setting same as that port number .



Note.1 Change and increase wait time when message [VFC64 was writing EEPROM] is displayed after data-writing ends. It may be 150ms or more.

2) [Refer to Log] (Communication log reference)

Select when refer again communication log "writelog.txt". When selected, screen shown below is displayed. When error occurred, setting item number and content of error are stored in communication log "writelog.txt". when closing of communication log reference screen, as "writelog.txt" is stored with superscription, comment can be added .



3. Explanation of set data edition  
 this shows editing method of set data.  
 Screen below is in case of selection of [New].

Machine:	Setting area	Setting contents	Initial val.	Setting val.	Decimal p.p.	Signif. fig.
VF64	Fund-0	Ref.SPD	12	12	0	5
Control Mode:	Fund-1	FOR-JOG.SPD	24	24	0	3
Sensorless	Fund-2	REV-JOG.SPD	-24	-24	0	3
Cap. Volt:	Fund-3	Acc1.Time	30.0	30.0	1	5
IR122	Fund-4	Dec1.Time	30.0	30.0	1	5
ROM Version:	Fund-5	Acc2.Time	0.3	0.3	1	5
01-A4	Fund-6	Dec2.Time	0.3	0.3	1	5
	Fund-7	ASR Pgain(1)	15	15	0	2
	Fund-8	ASR ltime	40	40	0	5
	Fund-9	ASR System-J	10	10	0	5
	Fund-10	Function Up	0	0	0	1
	A-0	Top.SPD	1800	1800	0	5
	A-1	Min.SPD	12	12	0	5
	A-2	Motor Cap	0.00	0.00	2	5
	A-3	Motor V	0	0	0	3
	A-4	Motor I	0.00	0.00	2	5

\* For changing of set data, select cell of row (blue) of “Setting val” in grid, and click or press return key, then, it is enable to input

\* Decimal poing position is shown at the row of “Decimal p.p” and number of effective digit of set data is shown at the right side of row of set “Signif.fig”.

For example, when changing of Fund.5 in above screen from 0.3 to 0.5, input 0.5.

\* After change of data, press return key surely. When color of cell varied to purple, change of data becomes effective. Color of cell return to original blue color by pressing of return key one more time , clicking the cell or clicking of another cell.

Note) 64Series Console DataSet does not check whether input data is within max. value and min. value . As VF64 checks that, surely confirm result of writing by communication log at the end of data writing.