



VF64 Series
Trace Back Monitor
INSTRUCTION MANUAL

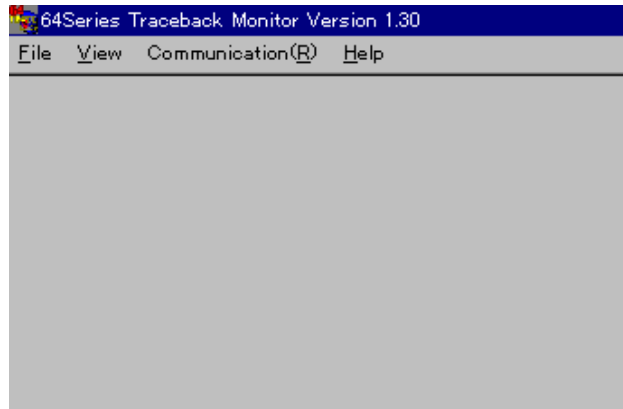
----- contents -----

1. Summary	2
2. Startup screen	2
3. Main menu	2
4. Read data	2
5. Graph window	3
6. Bit Data window	4
7. Data table window	5
8. Communication window	6
9. Version Information	6

TOYO ELECTRIC MFG.CO.,LTD

1. Summary

When trouble occurred in VF64, the data such as current, voltage, etc. are recorded in VF64 automatically. Trace Back Monitor is a tool to read these data, and to save to as file , to print these data.



2. Startup screen

3. Main menu

Menu	pull down Manu	Function
<u>F</u> ile		
	<u>O</u> pen	Open existing data file
	<u>S</u> ave	Store the data editing now as afile.
	<u>E</u> nd(X)	Exit from Trace Back Monitor
<u>V</u> iew		
	<u>G</u> raph Form	Display numerical data graphcally
	<u>B</u> it Data Form	Display bit data graphcally
	<u>D</u> ata Form	Display data table
<u>C</u> ommunication(R)		
	<u>C</u> ommunication	Set communication and read data from VF64
<u>H</u> elp		
	<u>V</u> ersion	Show Version No. etc
	<u>F</u> lag(L)	Explanation about functions of bit data

4. Read Data

1) Read data from VF64

Data which was stored in VF64 when trouble occurred can be read by menu [Communication]--> [Communication].

See section 8.

2) Open file

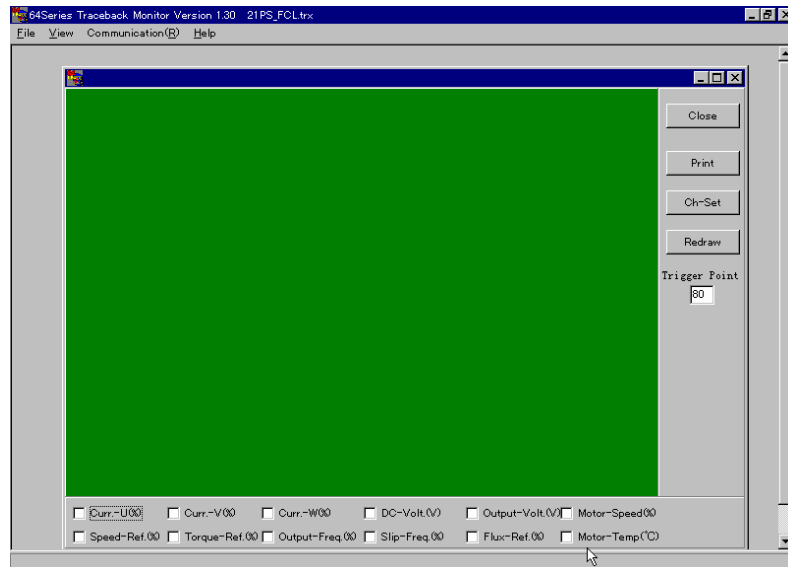
A file to which data was saved can be opened by menu [File]-->[Open].

5. Graph window

By menu

“View”->”GraphForm”
Graph Form is displayed.

- 1) Selection of channel
VF64 memorizes word data of 12ch. (for analogue signal).
Data of max. 5ch can be displayed at a time.
Select the data channel by checking box.

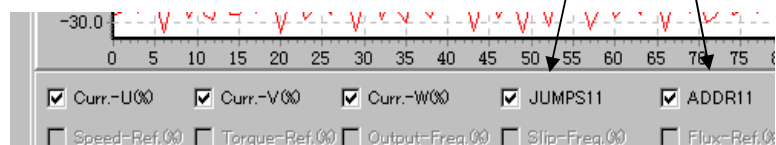
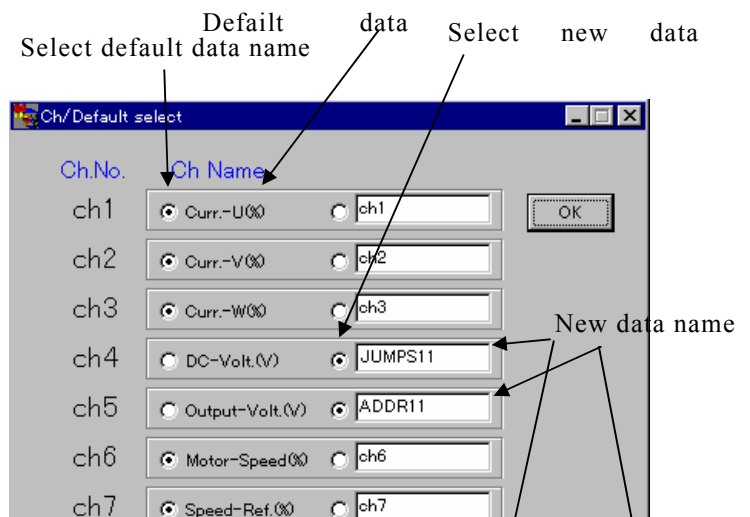


- 2) Button

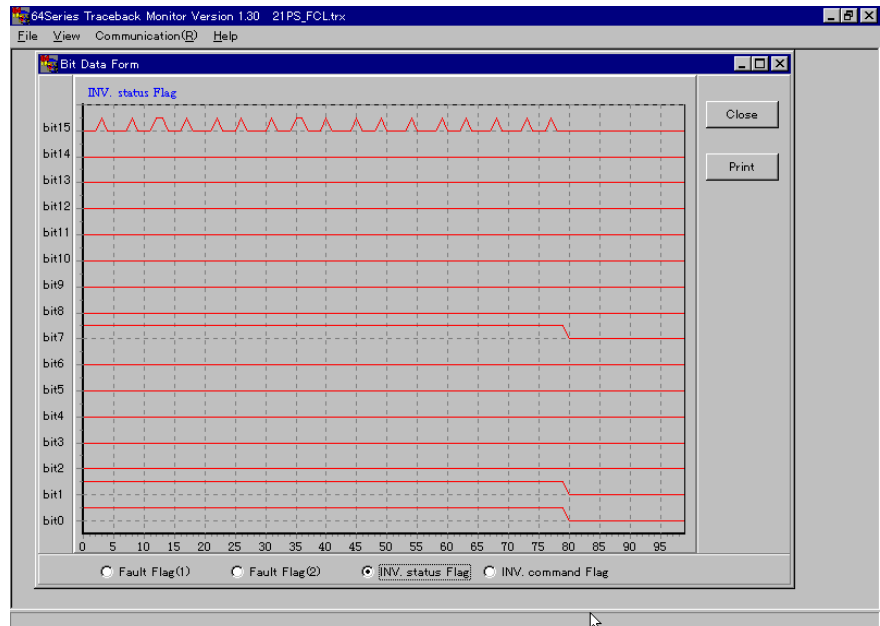
- (1) [Close] Close Graph Form and return to startup screen.
- (2) [Print] Setting Printer and Graph screen is printed.
- (3) [Ch Set] Open following screen. Data name on Graph Screen can be changed.

- a) “Ch Name” of left side (Curr-U(%)etc.) are default dataname of each channel.
- b) “Ch Name” of right side (ch1 etc.) are dataname that user can set.
- c) If button of left side is selected, “Ch Name” of left side (Curr-U(%)etc.) is displayed in Graph Screen.

If button of right side is selected, “Ch Name” of right side (ch1 etc.) is displayed in Graph Screen.
“Ch Name” of right side may be inputted as you like.
Note) This setting is for change only of data names on display Graph Screen and is not for setting of data to be traced back.



6. Bit Data window



(1) Selection of channel

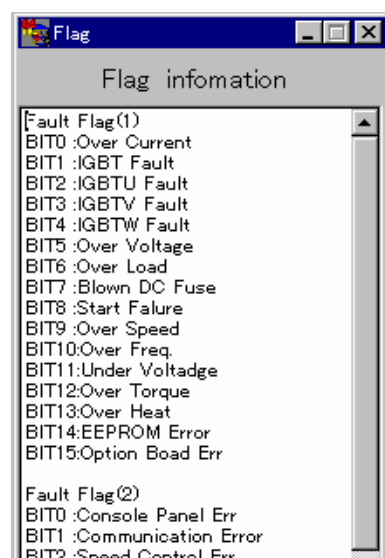
VF64 memorizes bit data of 4ch. There are data of 16bit in 1ch. By selection of radio button, each data can be displayed.

(2) Operation of button

- (1) [Close] Close Bit_Data Form and return to startup screen.
- (2) [Print] Setting Printer and Graph screen is printed.

(3) Flag Information Screen

- (1) By menu [Help]-->[Flag] , Flag Information Screen is displayed.
- (2) On this table , name or means of each bit data is written.



7. Data table window



	ch1	ch2	ch3	ch4	ch5	ch6	ch7
0	-25.06	145.00	-119.64	681.20	341.20	0.00	0.00
1	-24.30	121.04	-97.66	678.40	341.20	0.00	0.00
2	-15.18	74.12	-59.88	690.00	343.60	0.00	0.00
3	-24.30	147.72	-120.86	676.40	343.60	0.00	0.00
4	-15.42	101.54	-87.28	680.20	343.60	0.00	0.00
5	-15.66	80.54	-65.56	690.00	339.90	0.00	0.00
6	-35.18	187.22	-150.74	673.40	339.90	0.00	0.00
7	-17.64	83.76	-65.80	685.20	342.40	0.00	0.00
8	-10.98	74.86	-63.82	689.00	339.90	0.00	0.00
9	-26.78	165.00	-137.16	676.40	339.90	0.00	0.00
10	-16.66	80.06	-64.32	686.20	342.40	0.00	0.00
11	-26.04	129.94	-103.82	683.20	339.40	0.00	0.00
12	-28.26	156.60	-131.24	675.40	339.40	0.00	0.00

This is a table of all data ,16ch × 100 points, and it is possible to see all data using scroll bar.
If select “Norml”, value is presented in normalized value ,for example %.
If select “Orgn”, value is presented in VF64 internal value ,digital value in CPU .

8. Communication window

(1) Port Select

Select communication port No. Default is COM1.

(2) Data Select

VF64 has 2 groups of data, New and Old.

Select which data to read. Default is New data.

(3) Message

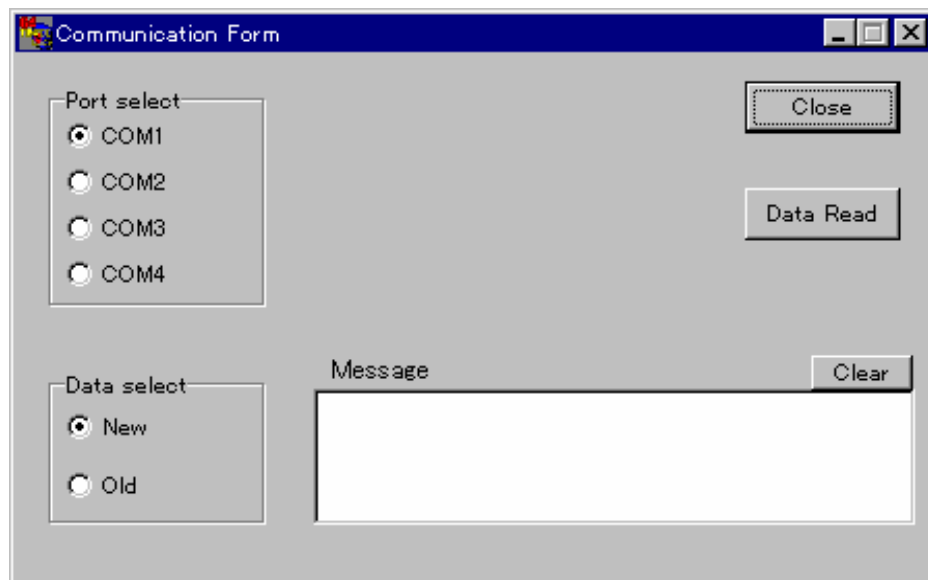
Message under communication is displayed.

(4) Function of button

[Close] Close Communication Screen and return to Startup Screen.

[Data read] Read selected data of trace back.

[Clear] Clear the content of message.



9. Version Information

By [help]-->[Version] , Version No of this software, your serial No etc. are shown