



VF64 Series

Trend Monitor

Instruction Manual

----- Contents-----

1. Summary	2
2. Startup screen	2
3. Main menu	2
4. Screen	2
5. Setting of indicative Variables	3
6. Start of Trend	5
7. Redraw	5
8. Store the data into file	5
9. Display, opening the file	5
10. Print	5
11. Communication setting	5
12. End	5

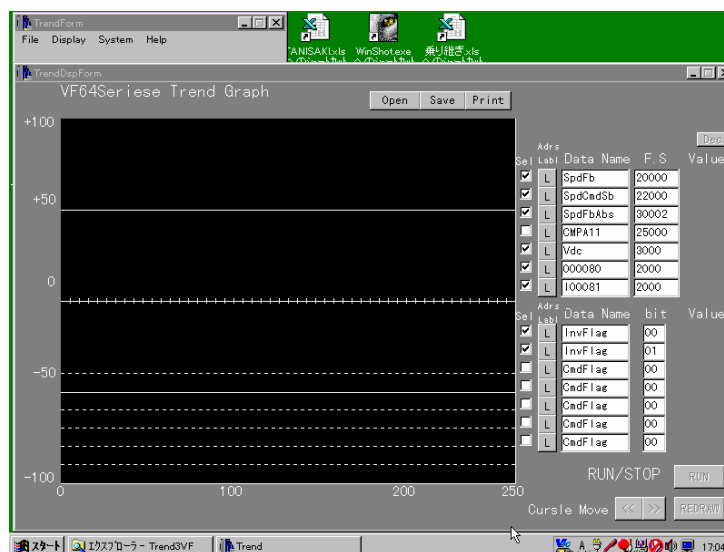
TOYO ELECTRIC MFG.CO.,LTD

1. Summary

Trend function indicates by graph the momentary data of internal Variables such as current and voltage of VF64 in real time by personal computer.

It also can store the data and read, display again and print.

2. Startup screen



3. Main Menu

Tool Bar	Manu	Function
File(F)	Exit(X)	Ends Trend monitor
Display(D)	VarList(V)	List of indicative Variables and data
System(S)	CommPort(C)	Set communication port.
Help(H)	About(A)	Display version information, etc

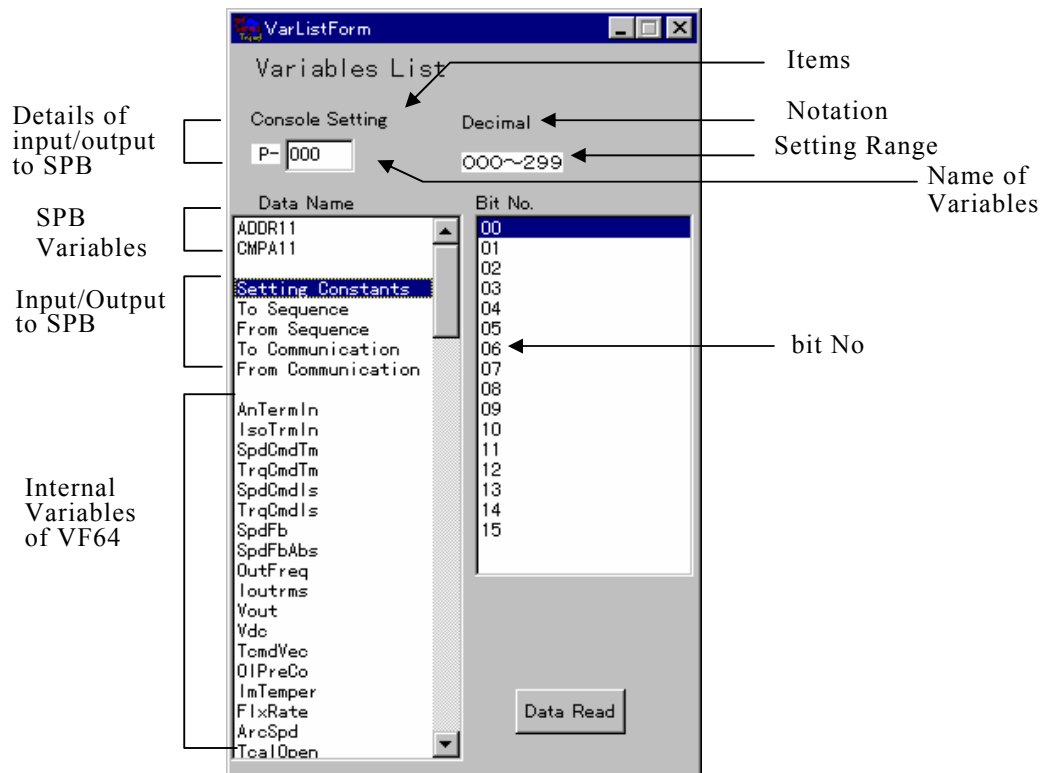
4. Screen

Screen	Function
TrendForm	Main menu
TrendDspForm	VF64Series Trend Graph screen. Screen to set Variables and scaling to be displayed and to display real time data.
VarListForm	Variables reference. List of indicative Variables. Select name of Variables from this list.
Comm Set	Designate communication port.
Version	Display version information, etc.

5. Setting of indicative Variables

1) Display of Variables List

By main menu [Display] - pull down menu [VarList], Variables reference screen is displayed



Just after display of above screen, left side column is blank.

If "Data Read" button is clicked in state that VF64 is connected, Variables is read-in from VF64 and is displayed as above Figure.

2) Data of Variables

The data selected (by cursor) in this screen is inputted to "Data Name" of graph screen.

Following items are listed in data of Variables:-

(1) SPB Variables

Output of SPB(Super Block function. see VF64 Series Super Block function Application Manual)

(2) Input/output to SPB function

a) Setting Constants

Designate console No. which sets control constant of SPB.

Name of Variables is shown as "P-xxx".

Clicking "Setting Constants" on the list of left side, input column is displayed at upper part of the list.

Designate "xxx".

b) To Sequence, From Sequence

Designate input/output signal to Sequence Function.

Names of Variables are shown as below:-

Variables to sequence ... "I00xxx"

Variables from sequence ... "O00xxx"

If "ToSequence" or "FromSequence" of the list of left side is clicked, input column "I00" or "O00" is displayed at upper part of the list. Input xxx in column of its right side.

c) To Communication, From Communication

Designate input/output signal to communication option.

Names of Variables are shown as below:-

Variables to communication option ... tJ-xxx

Variables from communication option ... fJ-xxx

If "To Communication" or "From Communication" of the list of left side is clicked, input column "tJ-" or "fJ-" is displayed at upper part of the list. Input xx or x in column of its right side.

3) Setting of display data

Set display data by column of right side of graph screen.

(1) "Data Name"

If this column is double-clicked, Variables pointed by cursor on "VarListForm" at that time is set in double-clicked column.

In setting of bit part, name of Variables and bit number are set in a pair.

(2) "F. S"

Input full scale value of graph.

(3) "Adrs Label"

Usually, this is used in state that "L" is displayed.

In case that address of Variables which is required to display is known, "Data Name" can be designated even by address. At that time, click small button of "Adrs Label" in order that "A" is displayed.

(4) "Sel"

Only the items which are check-marked in this column are displayed.

					Dec
Sel	Adrs Label	Data Name	F.S	Value	
<input checked="" type="checkbox"/>	L	ADDR11	20000		
<input type="checkbox"/>	L	CMPA11	22000		
<input type="checkbox"/>	L	AnTermIn	30002		
<input type="checkbox"/>	L	I00081	25000		
<input type="checkbox"/>	L	O00080	3000		
<input type="checkbox"/>	L	tJ-00	2000		
<input type="checkbox"/>	L	fJ-0	2000		

Sel	Adrs Label	Data Name	bit	Value
<input checked="" type="checkbox"/>	L	ADDR11	15	
<input checked="" type="checkbox"/>	L	ADDR11	14	
<input type="checkbox"/>	L	CmdFlag	00	
<input type="checkbox"/>	L	CmdFlag	01	
<input type="checkbox"/>	L	CmdFlag	02	
<input type="checkbox"/>	L	CmdFlag	07	
<input type="checkbox"/>	L	InvFlag	00	

6. Start of Trend

By clicking of "RUN" button at lower part of graph screen, sweep of graph is started.

If "RUN" button is clicked, sweep and stop of graph are done alternately.

NOTE) When "RUN" button is not in state of active, read-in name of Variables from VF64 by screen of VarListForm.

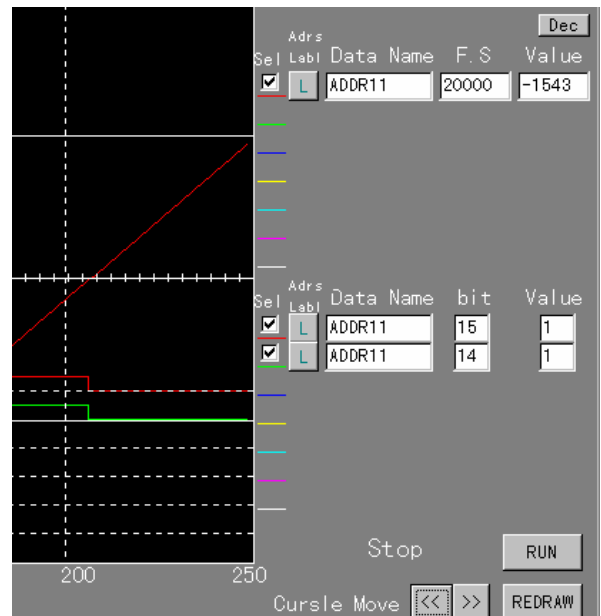
7. Redraw

If "REDRAW" button is clicked during stop of sweep, last 1 screen of graph data which have been displayed until then is displayed.

Also, cursor appears on graph and "Value" column appears at right side of setting column, and display the data of point where cursor stays.

By the button at right upper side of setting column, notation of data can be changed over to decimal "Dec" and hexadecimal "Hex" alternately.

By "<<", ">>" button, cursor can be moved to right and left.



8. Store the data into file

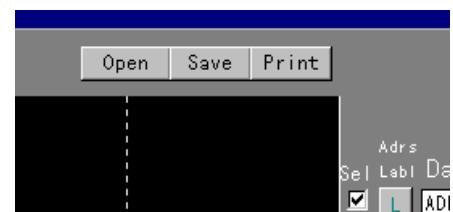
Click "Save" button of upper part of screen during stop of sweep.

If file name is designated, screen at that time is stored.

9. Display, opening the file

Click "Open" button at upper part of screen during stop of sweep.

If file name is designated, wave form served in the past is displayed.



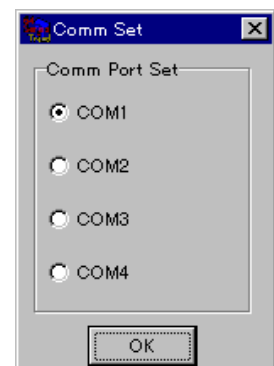
10. Print

Click "Print" button at upper part of screen during stop of sweep.

11. Communication setting

Initial setting is COM port 1. If setting another port is required, please designate.

This screen is displayed by "System" - "CommPort" from main menu.



12. End

Program ends by "File" - "Exit" from main menu.